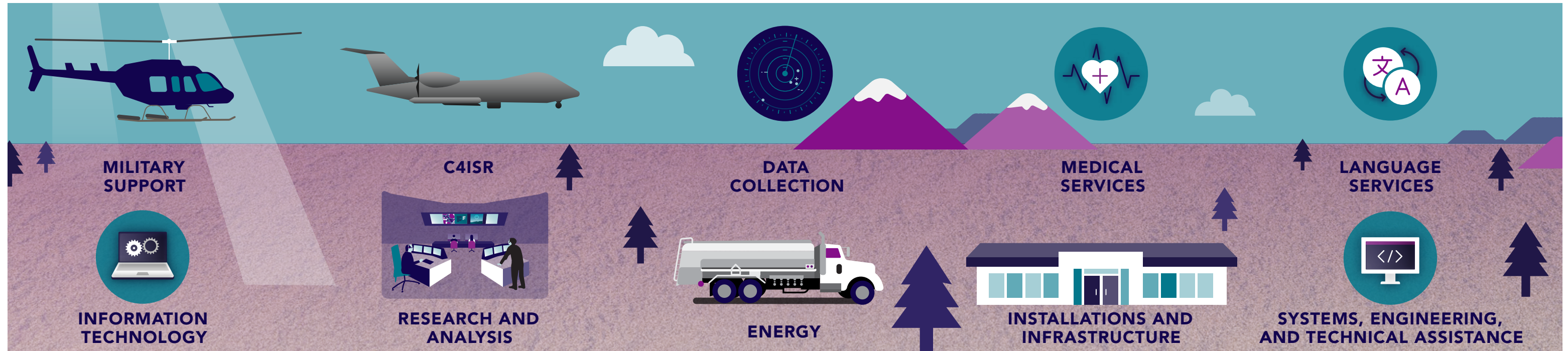


Mission Operations

Proven Expertise Across Mission Critical Operational Areas



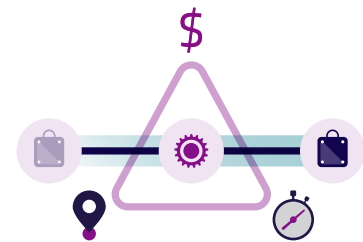
LIFE CYCLE SUSTAINMENT MANAGEMENT



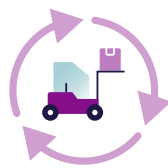
Planning & Management
Development, implementation, and management of requirements, concept, and detailed procedures for a system.



Packing, Handling, Storage & Transportation Methodology to ensure that all system, equipment, and support items are preserved, packaged, handled, and transported properly.



Supply Support
Planning and sourcing of all classes of supplies to ensure they are available at the right place, at the right time, at the right price.



Product Support Management
Planning and management of cost and performance across the product life cycle.

TECHNICAL MANAGEMENT



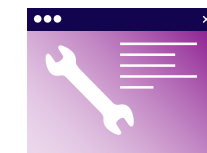
Design Interface
Systems engineering to integrate design parameters with support requirements and ensure goals are met.



Technical Data
Management and analysis of information to provide decision advantage.



Sustaining Engineering
Support of in service systems in their operational environment to include identification, review, assessment, and resolution of deficiencies throughout a mission.



Computer Resources
IT resourcing and infrastructure to operate and support mission critical systems including manpower, personnel, hardware, software, and documentation of licenses and services.

INFRASTRUCTURE MANAGEMENT



Facilities & Infrastructure
Management of permanent and semi-permanent real property assets and infrastructure required.



Support Equipment
Support of fixed and mobile equipment required to sustain the operation.



Manpower & Personnel
Identification and acquisition of personnel with the expertise and skills required to ensure mission performance.



Training & Training Support
Integrated strategies to train personnel to acquire, operate, maintain, and support a mission, including Training Aids, Devices Simulators, and Simulations.